

FOR LEASE OFFICE/WAREHOUSE



**2907 OLD SHELL ROAD
CORNER OF OLD SHELL & LEFEVRE ST.**

LEASE RATE: \$4.25 SFQT

LOT SIZE: 200' Old Shell Rd x 150' Lefevre Street—9,000± SQFT

Building Zoned B-3

Unit A:

3,000 ± Sqft.

Approx. 900 sqft of Office space

Approx. 2,100 sqft of Warehouse

16' eave height

3 Ground Level Doors

Small fenced yard.

Unit B:

6,000 ± Sqft.

Approx. 595 sqft of Office space

Approx. 5,005 sqft of Warehouse

16' eave height

2—12' Ground Level Doors

Small fenced yard.



For more information, please contact:

Mike McAleer, Broker

3280 Dauphin St., Ste C104

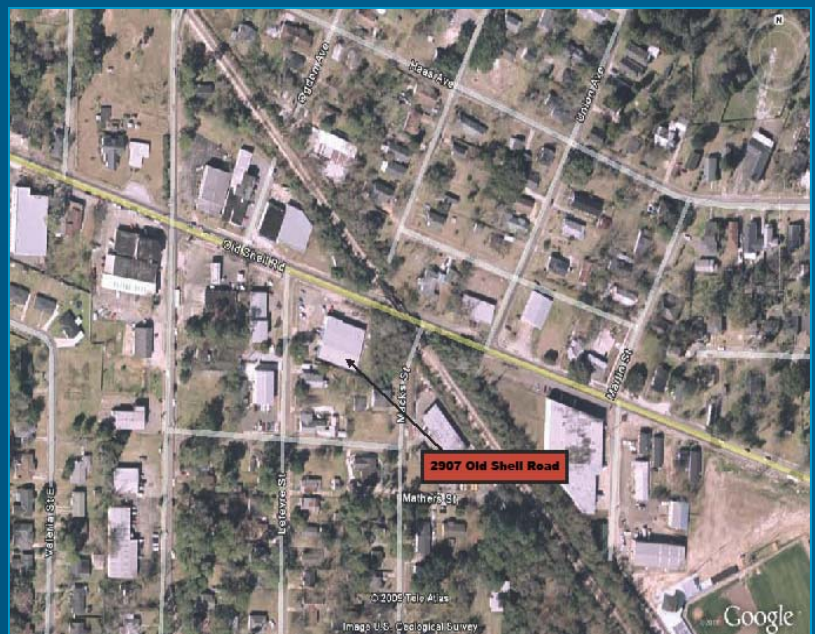
Mobile, AL 36606

Cell: 251-422-3336

Ph: 251-473-7517

mike@mcaleertunstall.com

www.mcaleertunstall.com



Attention: The information given herewith is obtained from sources agent considers reliable, however, agent is not responsible for misstatements of facts, errors or omissions. Purchaser must satisfy self of accuracy of any statement or projection relied upon. ALL FIGURES ARE APPROXIMATE.

2907 OLD SHELL ROAD

