

FOR LEASE

1900 A South Broad Unit F
Brookley Complex Broad at 15th Street



Size 2,360 SF

700 Office Space

1,600 SF Warehouse Space

Ground Level Door

Rate Gross to \$6.50 per SF Net

16' eave Heights

Located right off Broad across from
entrance to Airbus FAL. Easy ingress and egress to I-10 and 2
minutes from I-65.



PLEASE CALL

Mike McAleer

Office: (251) 473-7517

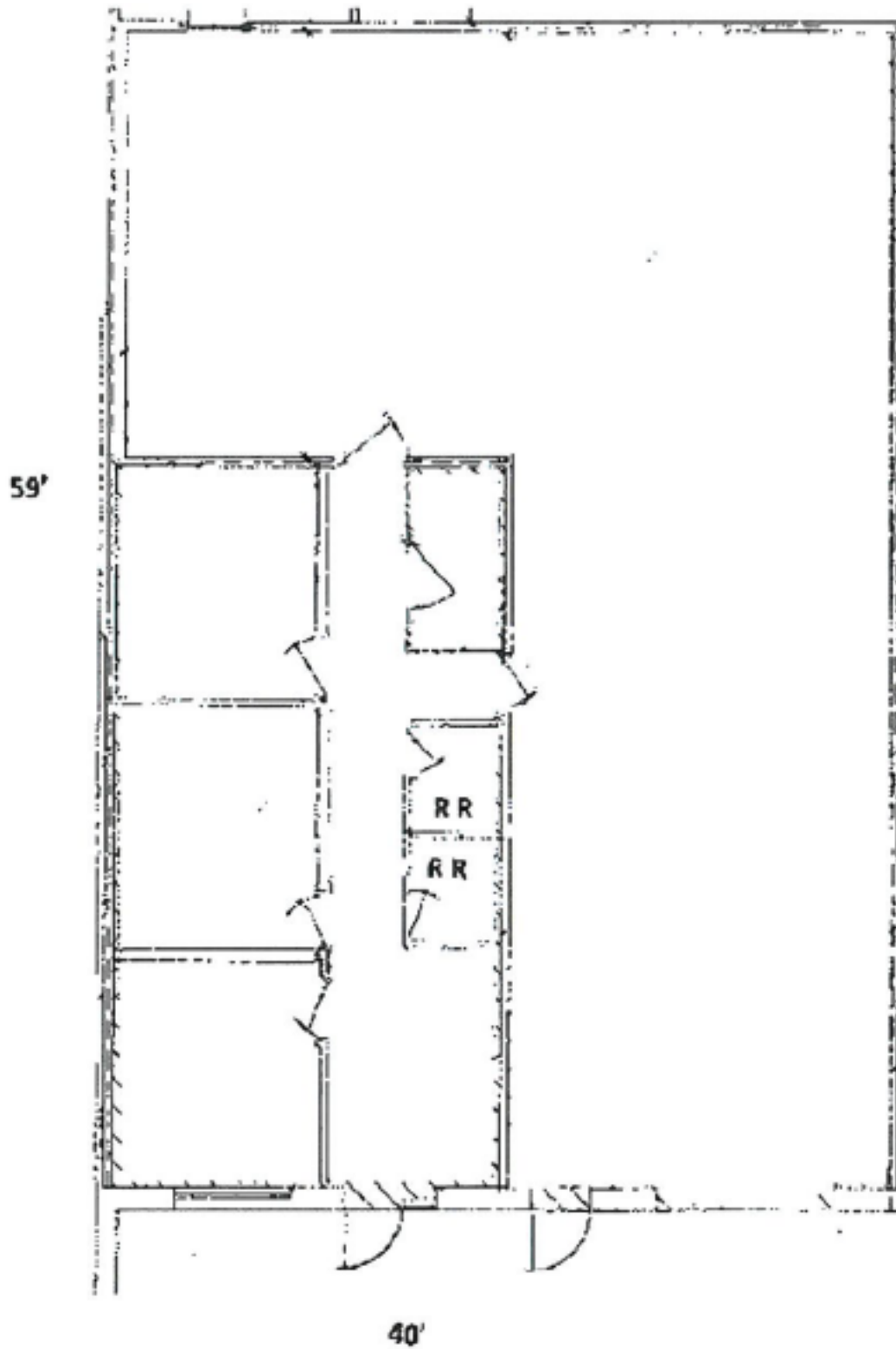
Cell: (251) 422-3336

Website: www.mcaleertunstall.com

Email: mike@mcaleertunstall.com

Information deemed to be accurate though not guaranteed

FLOOR PLAN



1900 A Unit F Broad Street Brooklyn

2,630 SF